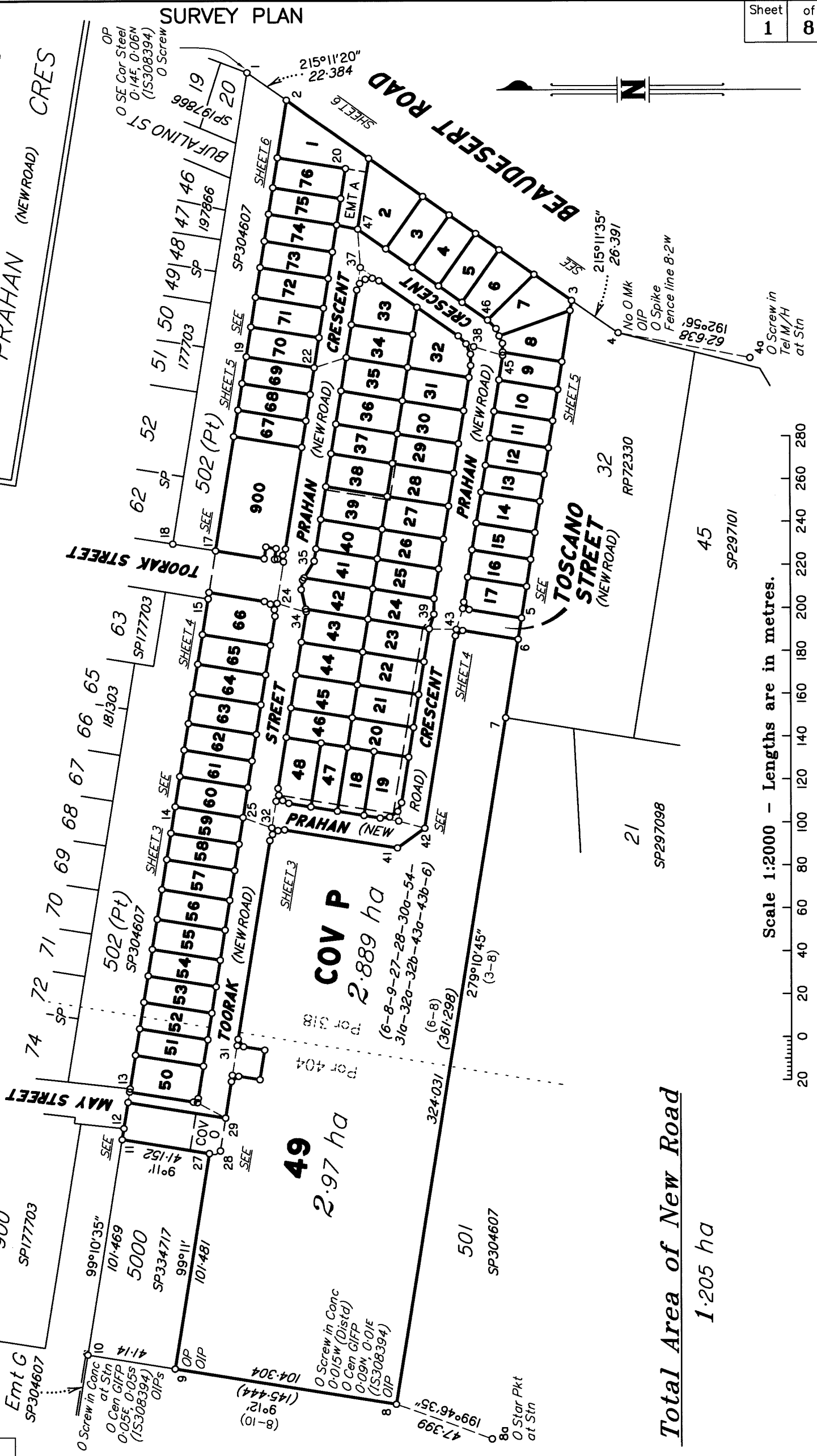


House Numbered Plan

Refer to Sheets 3-6
for Numbering



See Sheet 8 for Reference Marks &
MGA Coordinates Tables.

See Sheet 8 for Reinstatement Report.

Peg placed at all new corners,
unless otherwise stated.

Total Area of New Road
1.205 ha

SAUNDERS HAVILL GROUP PTY LTD (ACN 144 972 949) hereby certify that the land comprised in this plan was surveyed by the corporation, by Nathan John TOWN, registered surveyor, for whose work the corporation accepts responsibility, under the supervision of Stephen John SCOTNEY, cadastral surveyor, and that the plan is accurate, that the said survey was performed in accordance with the Survey and Mapping Infrastructure Act 2003 and Surveyors Act 2003 and associated Regulations and Standards and that the said survey was completed on 04/10/2023



N. Town
Authorised Signatory

M. Klein
Authorised Signatory

Date: 13-10-2023

Plan of Lots 1-76 & 900
and Easements A-E in Lots 1, 27, 28, 29 & 39 respectively, Covenants F-N in Lots 18-24, 47 & 48 respectively and Covenants O & P in Lot 49

Cancelling Lot 26 on SP334717
LOCAL GOVERNMENT: BRISBANE CITY LOCALITY: PARKINSON
Meridian: MGA (Zone 56) vide IS308394

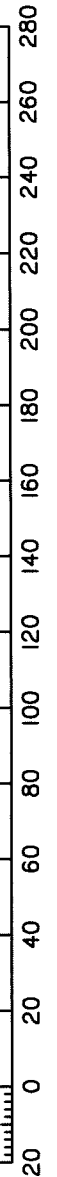
Scale: 1:2000
Format: STANDARD



SP338090

Survey Records: No

Scale 1:2000 - Lengths are in metres.



SAUNDERS HAVILL GROUP

1200 SP338090.DWG MS

WARNING : Folded or Mutilated Plans will not be accepted.
Plans may be rolled.
Information may not be placed in the outer margins.

(Dealing No.)

4. Lodged by

(Include address, phone number, email, reference, and Lodger Code)

I. Existing		Created		
Title Reference	Description	New Lots	Road	Secondary Interests
51313412	Lot 26 on SP334717	1-76 & 900	New Rd	Emts A-E & Cvs F-P

1-48, 53-76 & 900 50 & 51 49 & 52	Por 318 Por 404 Pors 318 & 404
Lots	Orig

2. Orig Grant Allocation :

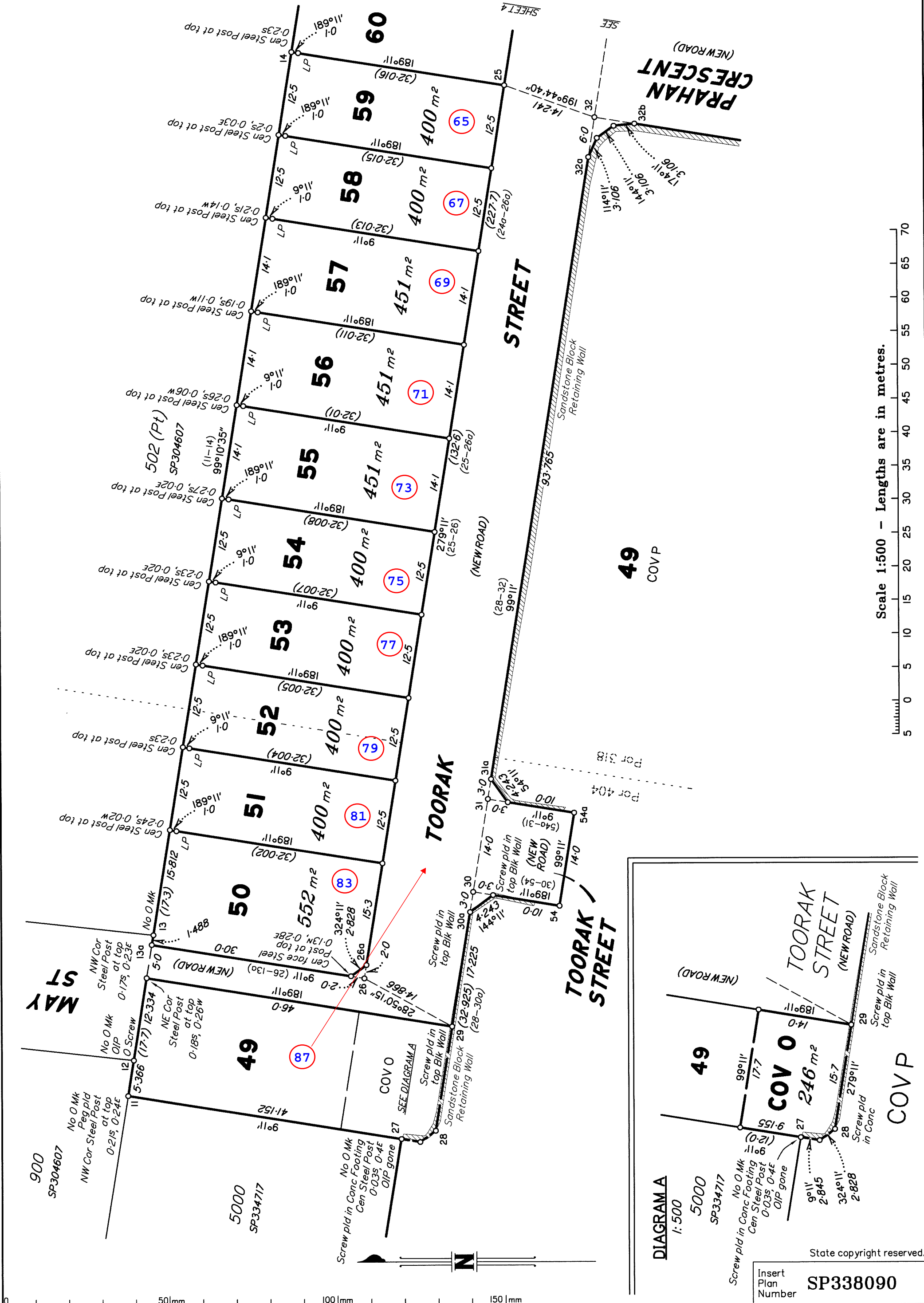
3. References :
Dept File :
Local Govt :
Surveyor : 11200

5. Passed & Endorsed :
By: SAUNDERS HAVILL GROUP PTY LTD
Date: 12.10.23
Signed: *ahy*
Designation: Endorsing Officer

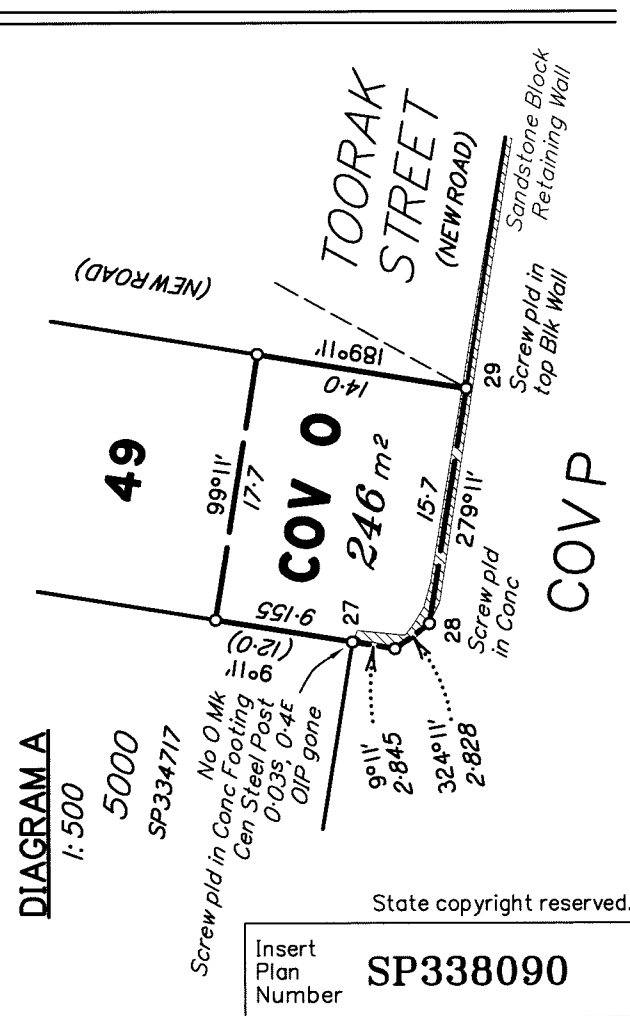
6. Building Format Plans only.
I certify that :
* As far as it is practical to determine, no part of the building shown on this plan encroaches onto adjoining lots or road;
* Part of the building shown on this plan encroaches onto adjoining * lots and road
.....
Cadastral Surveyor/Director* Date
*delete words not required

7. Lodgement Fees :
Survey Deposit \$
Lodgement \$
.....New Titles \$
Photocopy \$
Postage \$
TOTAL \$

8. Insert Plan Number **SP338090**

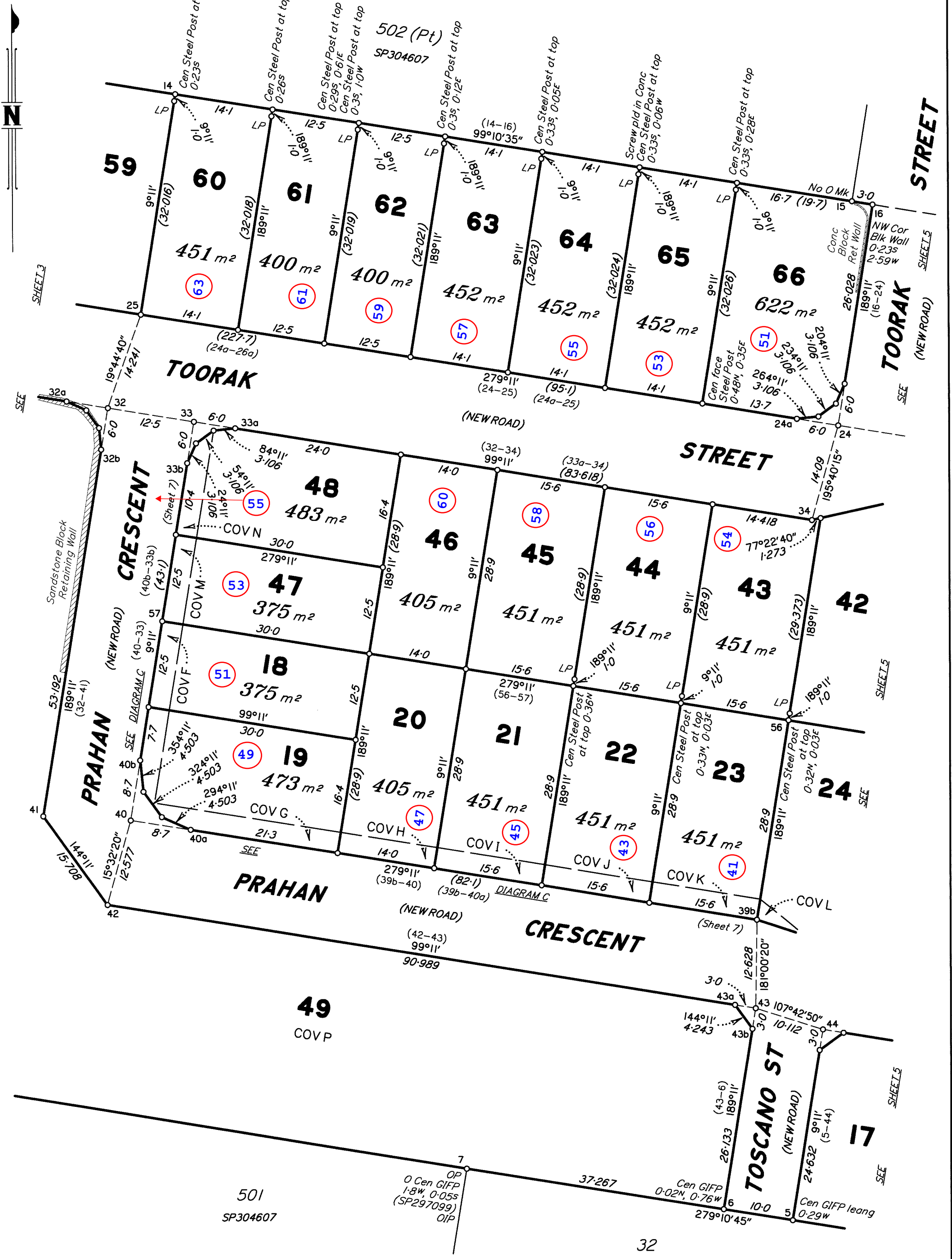


Scale 1:500 - Lengths are in metres.

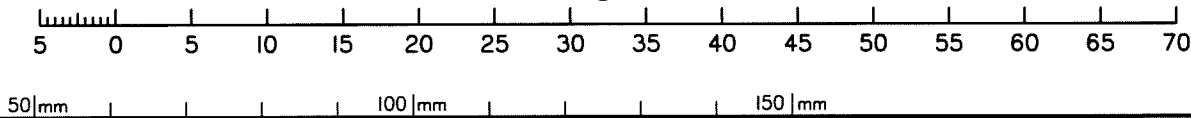


State copyright reserved.

Insert Plan Number **SP338090**

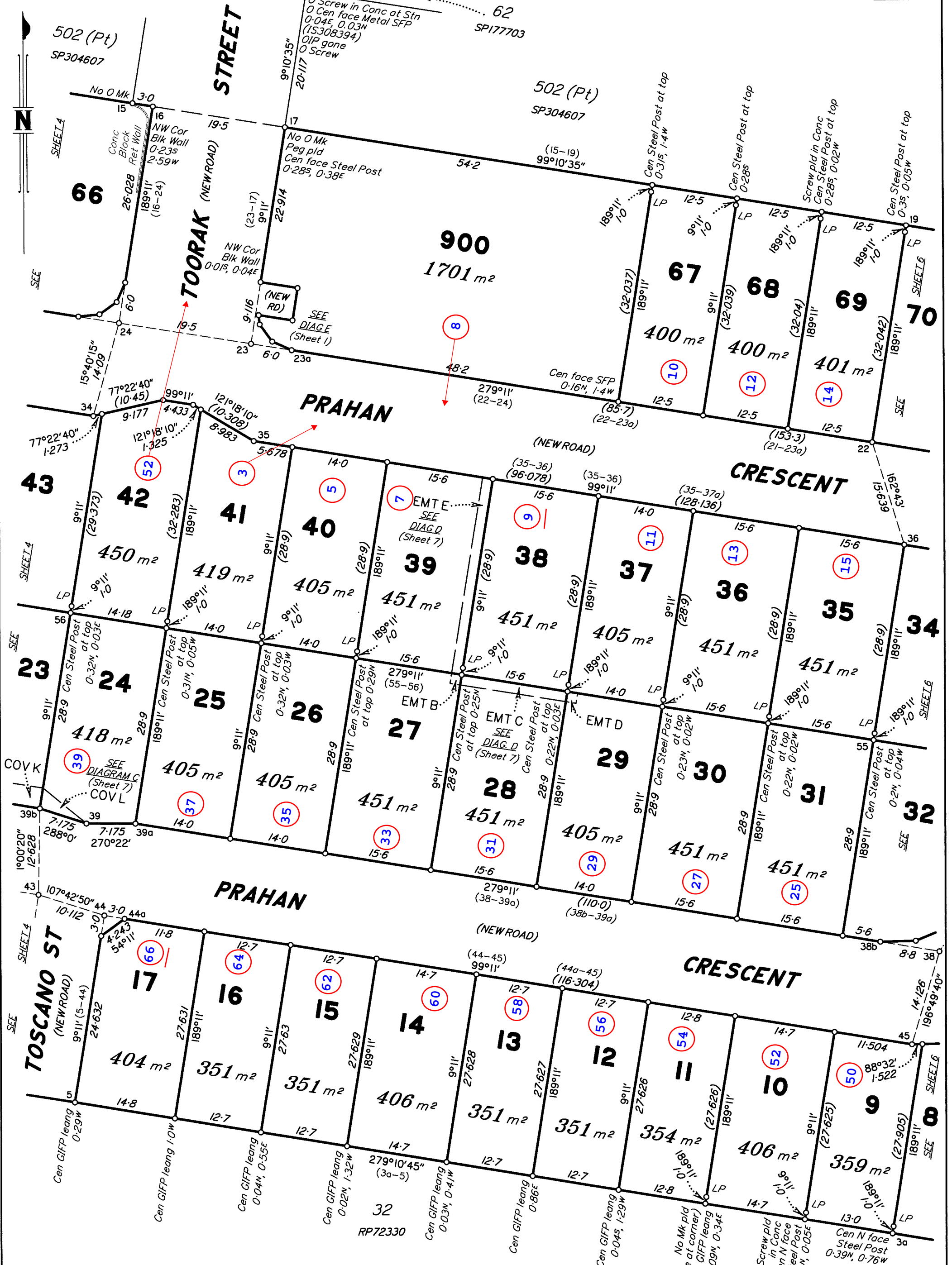


Scale 1:500 - Lengths are in metres.

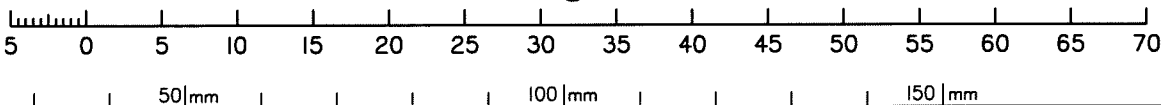


State copyright reserved.

Insert Plan Number **SP338090**



Scale 1:500 - Lengths are in metres.



Insert Plan Number SP338090

State copyright reserved.

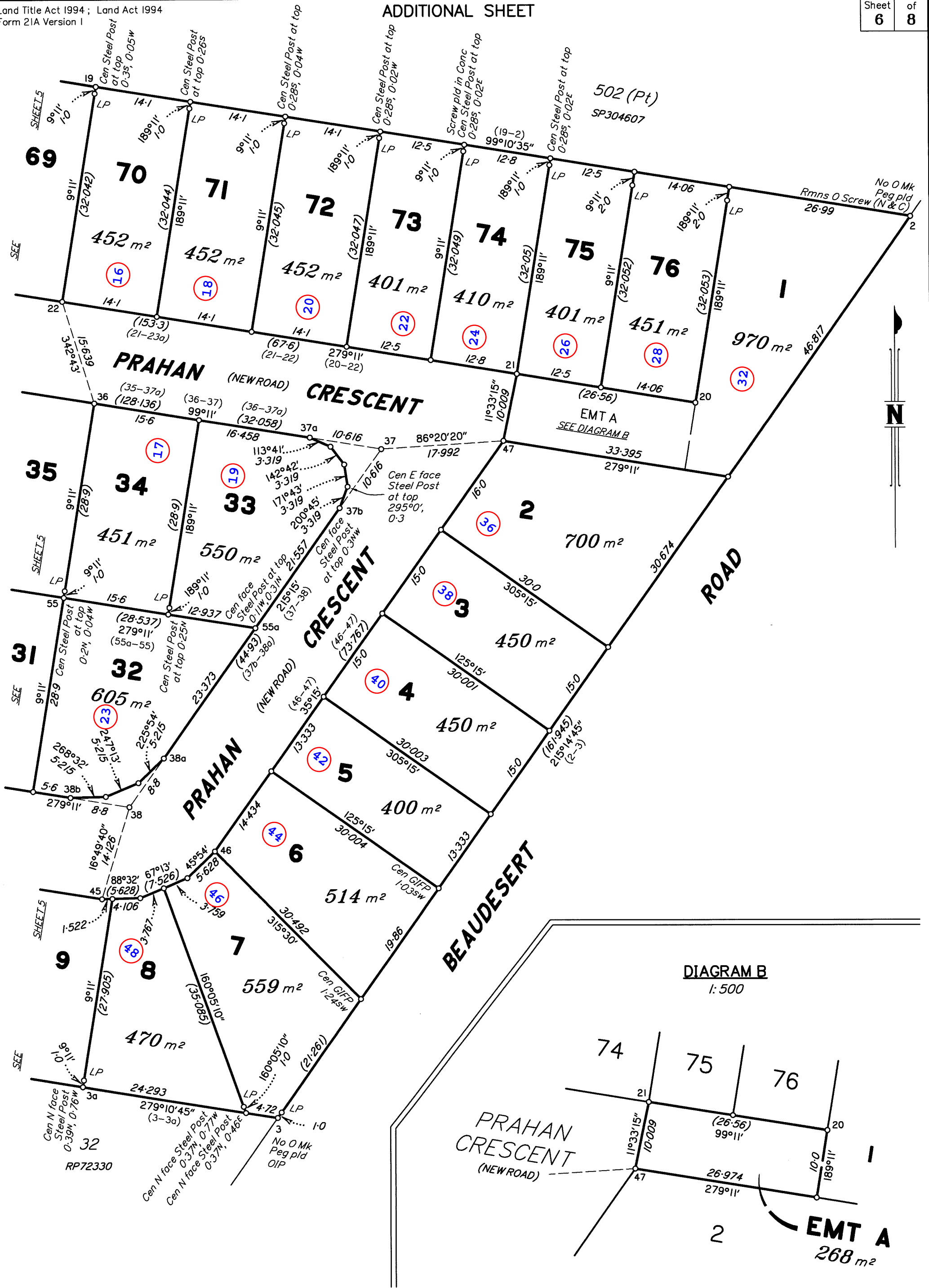
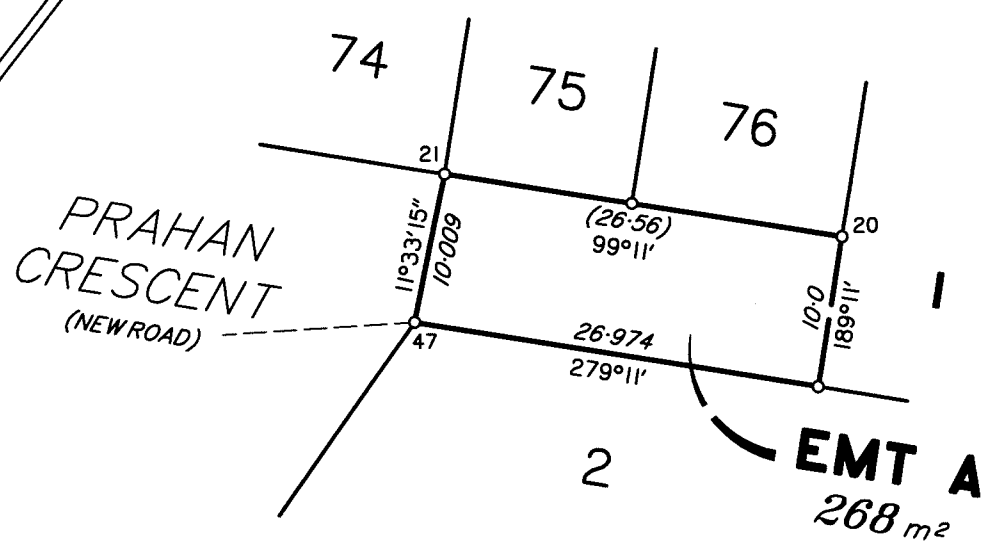
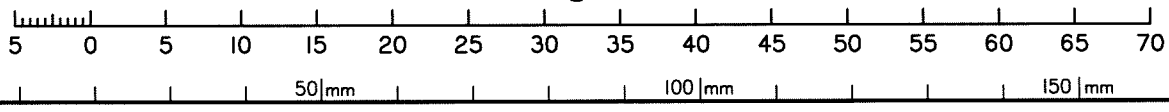


DIAGRAM B
1:500

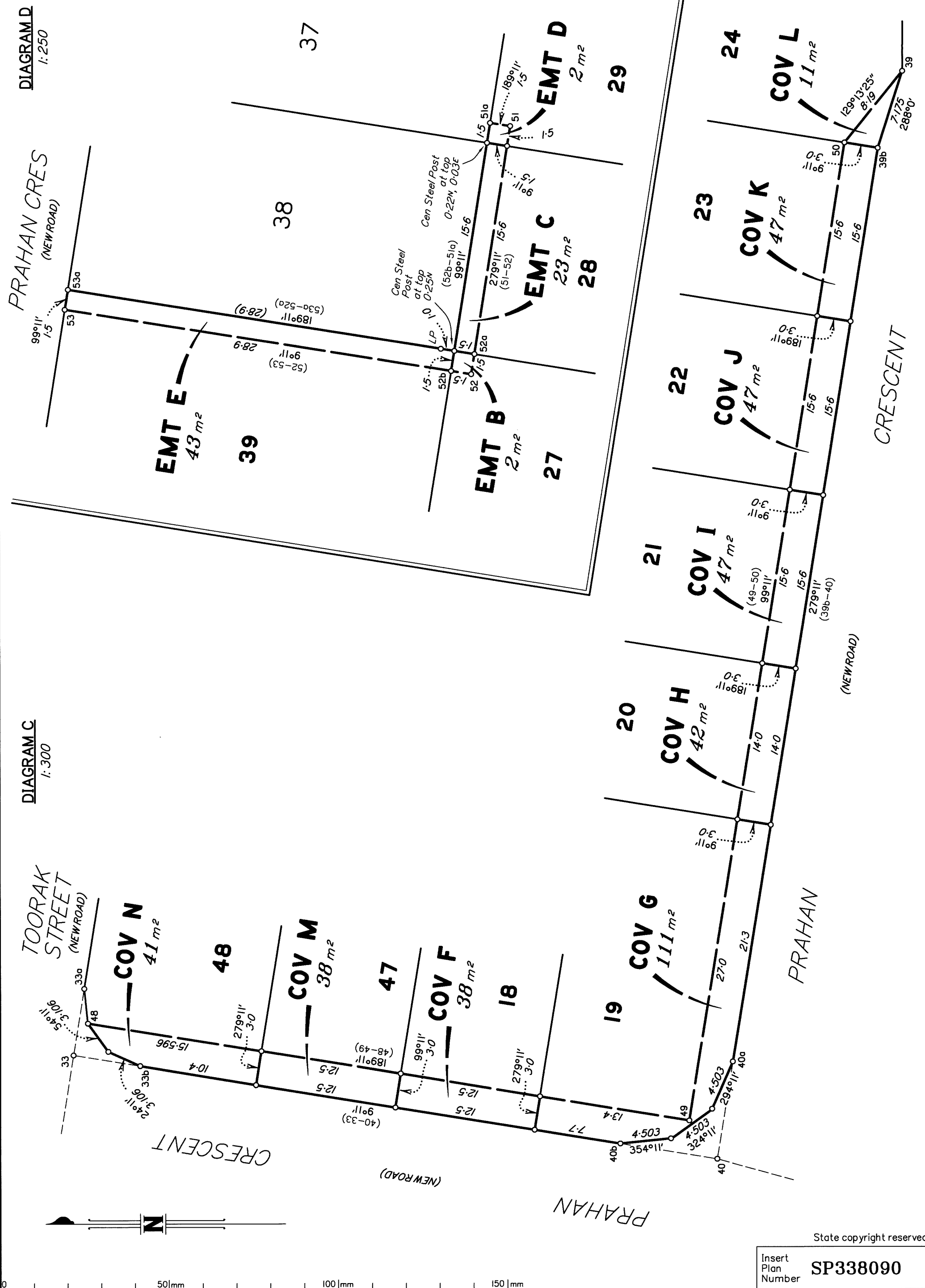


Scale 1:500 - Lengths are in metres.



State copyright reserved.

Insert Plan Number
SP338090



State copyright reserved.

Insert Plan Number **SP338090**

M.G.A. COORDINATES GDA-2020

STATION	EASTING	NORTHING	ZONE	P.U.	LINEAGE	METHOD	REMARKS
4a	504 197.525	6 942 320.578	56	0.032	Derived	Network Post-processed	O Screw in Tel M/H Surr
8a	503 696.485	6 942 441.676	56	0.032	Derived	Network Post-processed	O Star Picket

REFERENCE MARKS

STN	TO	ORIGIN	BEARING	DIST
1	O Screw in M/H	SP304607	184°16'50"	4.265
2	Rmns O Screw in Headwall (N&C)	SP304607	197°44'50"	17.349
3	OIP	IS308394	49°26'	2.77
4	OIP	IS308394	107°12'	1.279
4	O Spike	IS308394	112°20'	5.119
4a	O Screw in Tel M/H	IS308394	at Station	
7	OIP	IS308394	223°45'	2.176
8	OIP	IS17926	189°12'	1.0
8a	O Star Picket	IS308394	at Station	
9	OIP	SP334717	265°51'	2.624
10	OIP	SP304607	1°03'50"	0.978
10	OIP	IS308394	0°56'25"	25.105
12	OIP	SP334717	25°12'15"	19.949
12	O Screw in Conc	SP334717	18°0'	24.105
16	Screw in Channel		95°0'	4.338
17	Pin		274°50'	0.988
17	Screw in Kerb		277°41'	4.222
18	OIP gone	SP304607	238°15'50"	3.757
18	O Screw in Kerb	SP304607	310°05'50"	4.714
21	Screw in Conc		250°49'30"	17.777
22	Screw in Channel		262°36'	15.167
23	Pin		312°10'	0.36
23	Screw in Kerb		262°48'	2.12
24	Screw in Kerb		100°19'	2.416
25	Screw in Kerb		198°52'	6.537
26	Pin		282°0'	0.57
26	Screw in Channel		173°17'	4.654
27	OIP gone	SP334717	163°33'	5.756
29	Screw in Channel		64°59'	7.754
30	Pin		148°30'	0.287
30	Screw in Kerb		98°40'	3.725
31	Screw in Kerb		289°02'	3.442
32	Pin		283°0'	0.602
32	Screw in Kerb		344°0'	2.128
33	Screw in Kerb		350°25'	2.11
34	Screw in Kerb		295°39'	14.997
35	Screw in Kerb		62°13'	7.103
37	Screw in Kerb		247°54'	1.64
37	Pin		227°36'	3.262
38	Screw in Kerb		223°30'	3.635
39b	Screw in Kerb		201°57'	4.67
39b	Screw in Kerb		271°08'30"	30.664
40	Screw in Kerb		276°55'	0.95
42	Pin		26°04'	2.232
42	Screw in Kerb		12°36'	4.572
43	Screw in Kerb		324°34'	0.238
44	Pin		40°06'	1.27
44	Screw in Kerb		5°19'	1.95
45	Pin (0.4 deep)		49°14'	2.152
45	Screw in Kerb		41°49'	6.834
47	Screw in Channel		229°46'	18.227
55a	Screw in Channel		96°17'30"	5.1

REINSTATEMENT REPORT

Stations 1 - 4, 7 - 13, 15, 17, 18 and 27 have been fixed by original marks, occupation and dimensions in agreement with IS308394 and SP334717.

The original screw related to station 2 was found in a concrete headwall, the shaft only remains (previously described Screw in M/H on SP304607).